

# CO1010

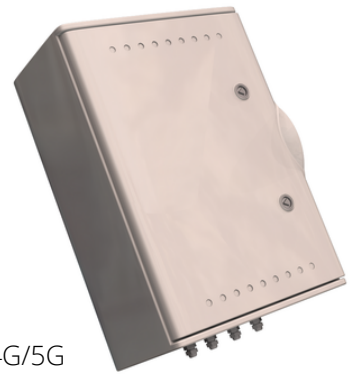
## Control unit



*Local data storage, communication with control server.*

Control unit CO1010 has been designed to be connected to the sensors and to process, archive and send the data received from them.

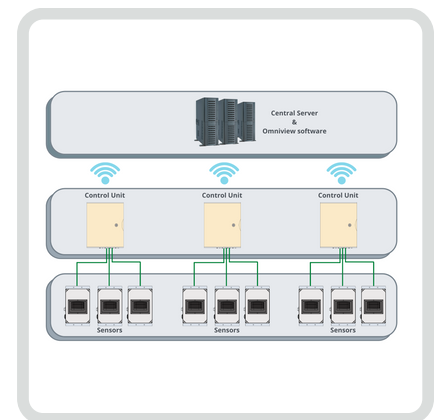
- Polling the sensors to receive the transit data
- Analysis of congruity on the data received
- Local data storage
- Data aggregation according to configurable periods
- Traffic status processing (stopped, slowed down, regular)
- Configuration of the unit and of the sensor through a web interface
- Sensor diagnostics
- Data communication with the Control Center through Ethernet line or wireless 4G/5G



The connection to the central server is continuously monitored and, in case of transmission fault, the data is stored locally to be subsequently transmitted when the communication is restored.

The heart of the control unit consists of an embedded CPU with Linux Embedded operating system and the COMARK Trafficlink software.

The CPU, the router and the sensors are controlled by a watchdog card that monitors the correct functioning of the equipment and in case of anomalies it makes a reset.



CO1010 is composed by:

- CPU
- Power supply
- Power switch and line Protection
- Sensors power distribution
- Communication distribution (ethernet switch or 485 multidrop)

### ACCESSORIES

- Mounting Brackets
- 4G/5G Router
- Heating System



Comark srl

**Registered Office:**  
Strada delle Betulle, 89  
33030 Campofornido (UD) Italy  
info@comarkud.it  
P. IVA 02327660300

**Headquarters:**  
Via Galileo Galilei, 5  
33010 Tavagnacco (UD) Italy  
Tel. +39 0432 882105

[www.comarkud.it](http://www.comarkud.it)

