

SENTINEL 10

Laser Scanner



Safety at Intersections and cycle paths

Bicycling is a healthy and environmentally conscious way to travel. However, it is not without risks. It is demonstrated that cyclists' serious injury crashes and accidents occur at intersections. Even drivers who are diligent about watching their surroundings on the road can have a difficult time seeing bikes and pedestrians at intersections. When a car is sitting in the middle of a crossing, it can be very easy to miss a bike on the other side with the right-of-way.

Thinking at those events, Comark has developed a new system – SENTINEL 10 - to be installed at the intersections or cycle paths to prevent injuries, decreasing and prevent the risk of accidents in favor of safety.

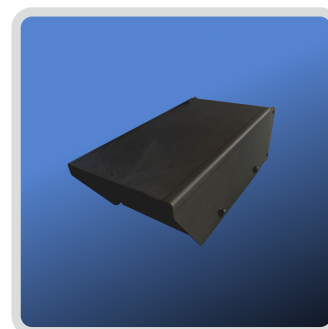
The sensor should be installed at the side of the cycle lane and will emit a laser ray that detects the transit of bikes or pedestrians. It is easy to install, and the configuration is set up by downloading an application from your smartphone.

There are several versions of SENTINEL10 – in case you need to install more than one sensor, the laser scanners interact with all other SENTINEL 10 systems, the central unit and flashing light by wire or wireless system.

The system has been designed to have a low-power consumption and to be powered by a solar panel and a control unit with battery. Riders, pedestrians and drivers will all benefit of SENTINEL 10 at intersections preventing them from accidents.



Flashing Light



Sentinel-10



Technology	Single Beam Laser
Emitted Light	905 nm not visible
Laser class	Class 1
Scan angle	3°
Scan period	40 ms
Flashing Light	
Technology	High Brightness Led
Brightness	2.5Klux
Sensor and Flashing Light	
Power supply	12 Vdc
Protection	IP65
Temperature range	-10°C ÷ +60°C

Comark srl

Registered Office:
Strada delle Betulle, 89
33030 Campoformido (UD) Italy
info@comarkud.it
P. IVA 02327660300

Headquarters:
Via Galileo Galilei, 5
33010 Tavagnacco (UD) Italy
Tel. +39 0432 882105

Pag. 52